

“自行车”
几何形态
参数化设计

“Bikes”
Geometry
Parametric Design



澳大利亚悉尼哈雷·戴维森澳大利亚总部 New Headquarters for Harley Davidson, Australia

设计单位：Tony Owen Partners
项目地址：澳大利亚悉尼

Designed by: Tony Owen Partners
Location: Sydney, Australia

项目概况

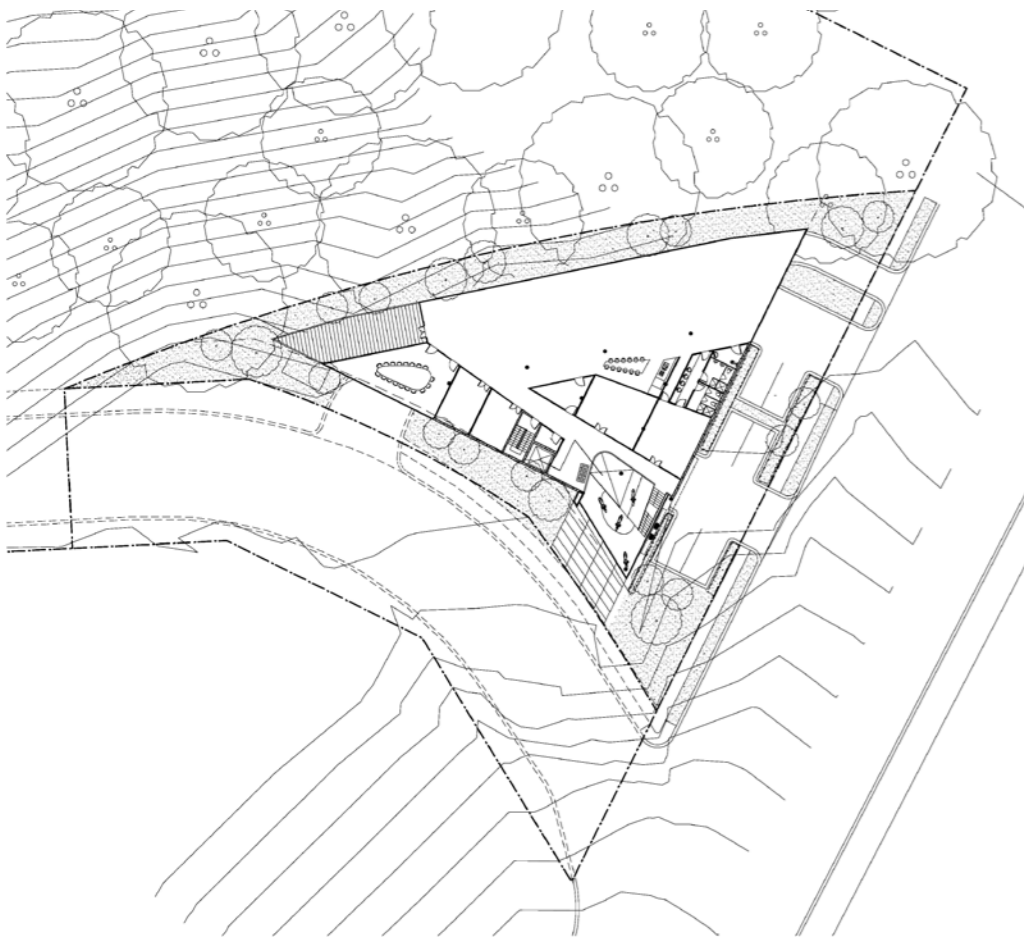
这栋哈雷·戴维森澳大利亚总部由悉尼建筑事务所 Tony Owen Partners 设计，位于悉尼风景秀丽的莱恩湾，是这一带新落成的莱恩河商业园的标志性建筑。

设计灵感

设计从自行车身上寻找灵感，从建筑线条上能看到引擎框架的几何形态，旨在设计一栋能反映哈雷·戴维森独特性的建筑。设计过程中，并不是复制这种几何形态，而是模仿了这种流动性和风格，同时也不是片面采用其外观，而是通过建筑线条的流动性表现出高雅、动感的建筑形态。

建筑参数化设计

建筑在外观和复杂的几何形态的建造上都采用了 3D 建模和参数工具，由于几何体相当复杂，因此了解结构与金属外墙之间的相互作用尤为重要。建筑设计将每个结构、立面元素制作模型，使其能准确地知道空间中每一个元件间的相互联系。这一技术也使得建筑成为一个结构，使它比之前看起来更直观、更容易理解。



Profile

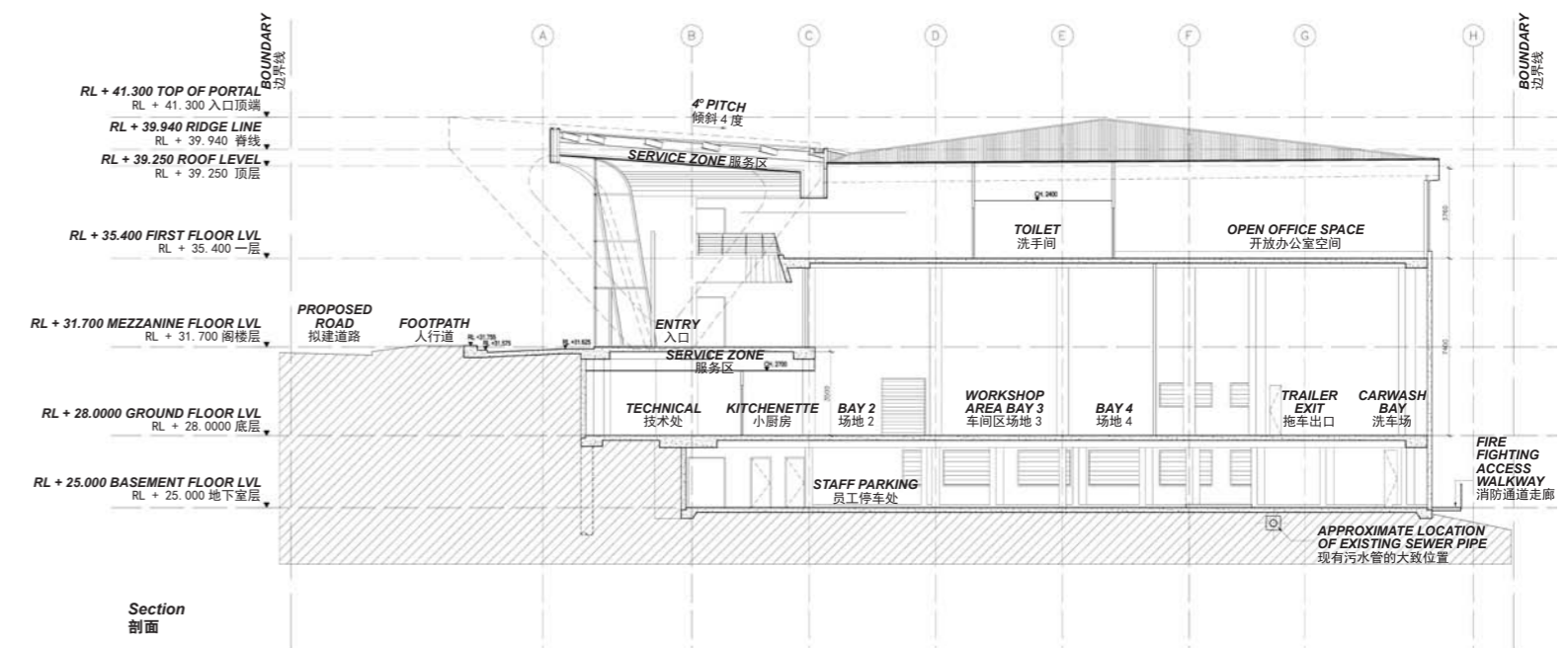
The new Australian headquarters of Harley Davidson is designed by Tony Owen Partners. The building is located in Lane Cove and forms an iconic gateway to the new Lane Cove River business park.

Design Inspiration

The design takes inspiration from bikes. The geometry of the engines forks and frames can be seen in the lines of the building. The building does not copy them; however, it suggests the movement and style. Rather than using the shape literally, the design expresses elegance and aerodynamics of this movement in the lines of the building.

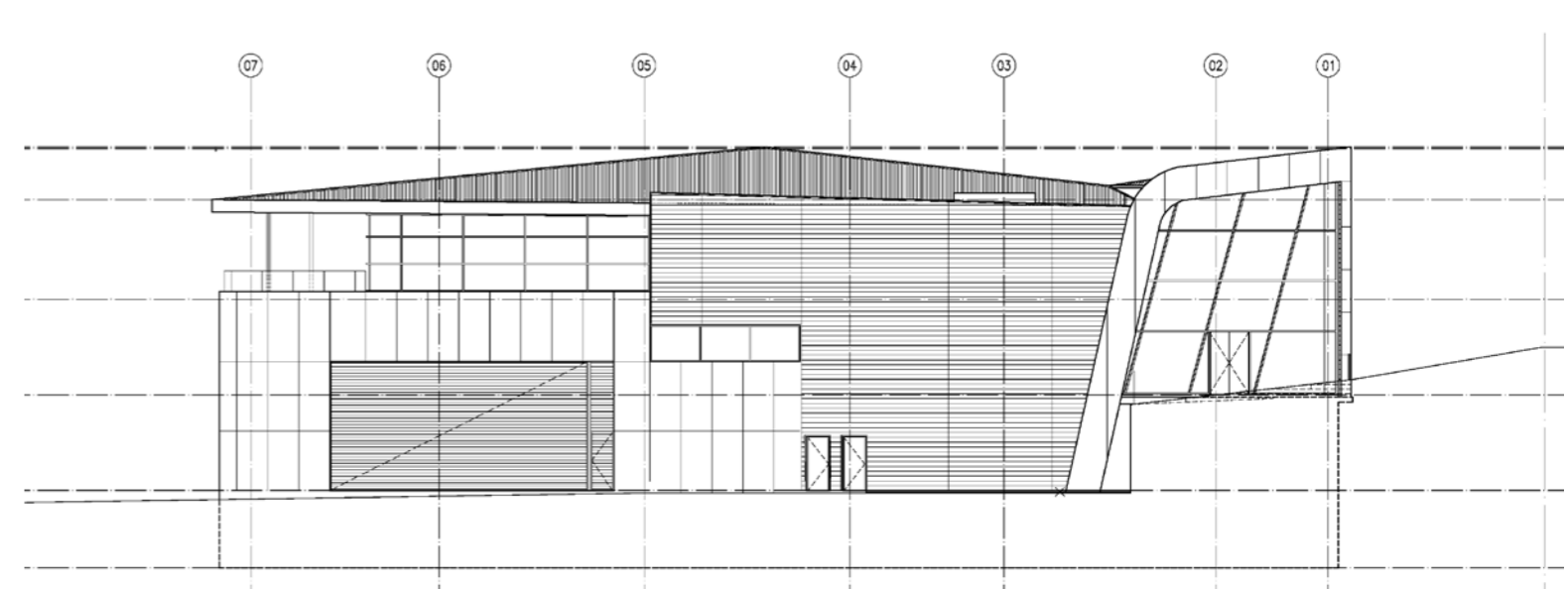
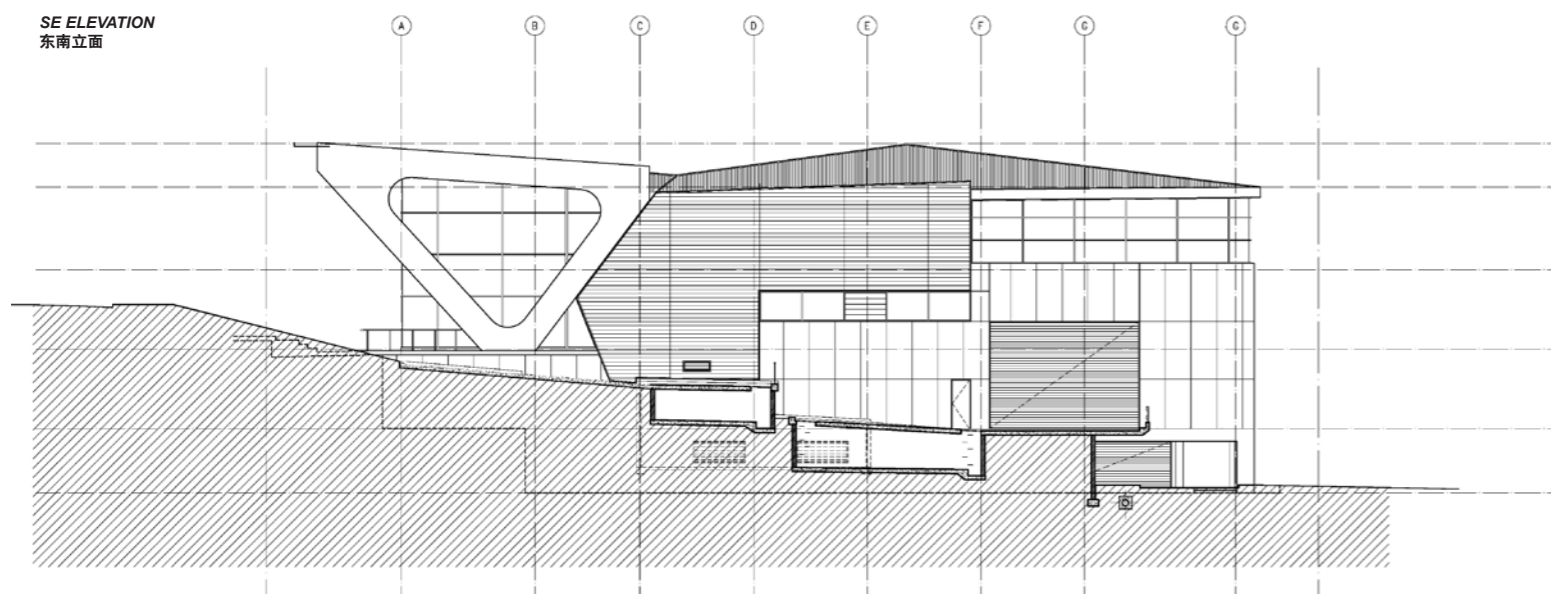
Parametric Design

The office is increasingly using 3-D modelling and parametric tools both in the generation of formal solutions and in the development and construction of complex geometries. Because the geometry is complex, it is important to know how the structure interacts with the metal cladding. By modelling every element of structure and façade the architects know exactly how each piece related to another in space. This technology makes building a more straightforward structure, much easier than it might have been in the past.





SE ELEVATION
东南立面



翡翠公寓

Jade Apartments

项目地址：悉尼

Location: Sydney

非公式化
设计
玻璃幕墙
建筑

Non-formula
Design
Glass Curtain Wall
Construction



项目概况

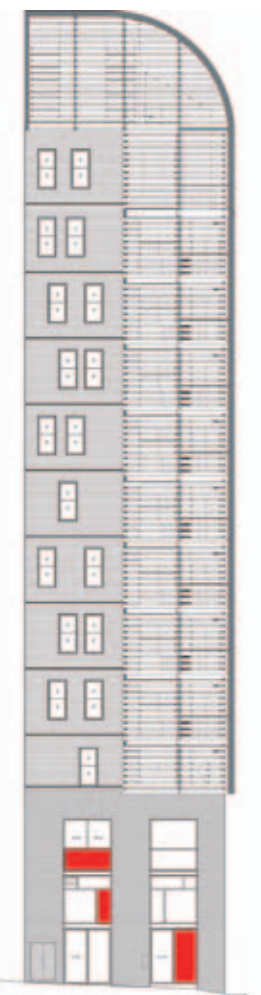
翡翠公寓大楼坐落在悉尼中央商务区，建筑楼高 15 层，包含 27 个一、二、三居室的公寓，以及一个拱形的玻璃天花板的夹层阁楼。建筑师们通过使用非公式化的设计方法，以丰富生活体验。他们认为生活环境应该涉及到居民的情绪，或者至少提供能够吸引各种生活方式的多样化环境，而不是他们通常给予的平淡无奇、公司化的环境。

建筑设计

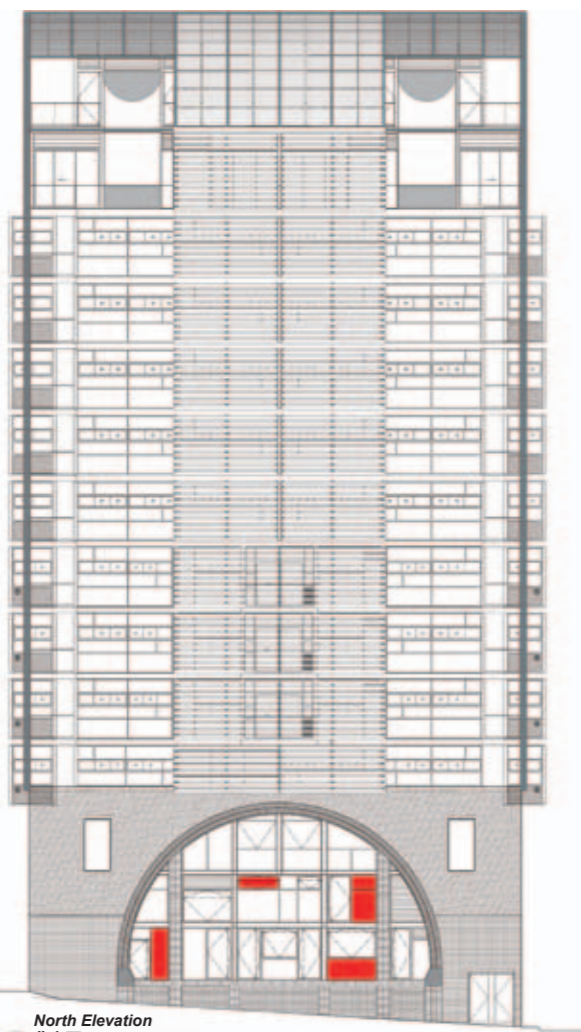
该建筑是朝北的，而且它有一个全釉面外观，大型金属穿孔百叶叶片和穿孔纱网的设计让屋主能够自主地控制阳

光、美景和隐私。玻璃幕墙建筑有一个由于其上升的短暂的品质，能随着高度的拔升最终在拱形的透明屋顶达到顶点。

该建筑坐落在城市历史的一部分，被 4 层高的砖石前仓库包围。该塔浮在一个拱形砖石裙楼之上，在视觉上也与毗邻的砖瓦建筑完美的结合在一起，并且呼应这个城市一部分的字符。它的大厅在同一个空间包含了住宅的门厅和咖啡厅 / 小酒馆，其中在入口有一个拱形天花板。翡翠公寓将外部引入，这个开放性的设计理念延伸到所有的阳台和生活区，由全高的玻璃做进一步的诠释。翡翠公寓的内部设计与结构化的线性元素和弧形玻璃幕墙概念相互影响，与公寓反映了城市生活方式的流动性。



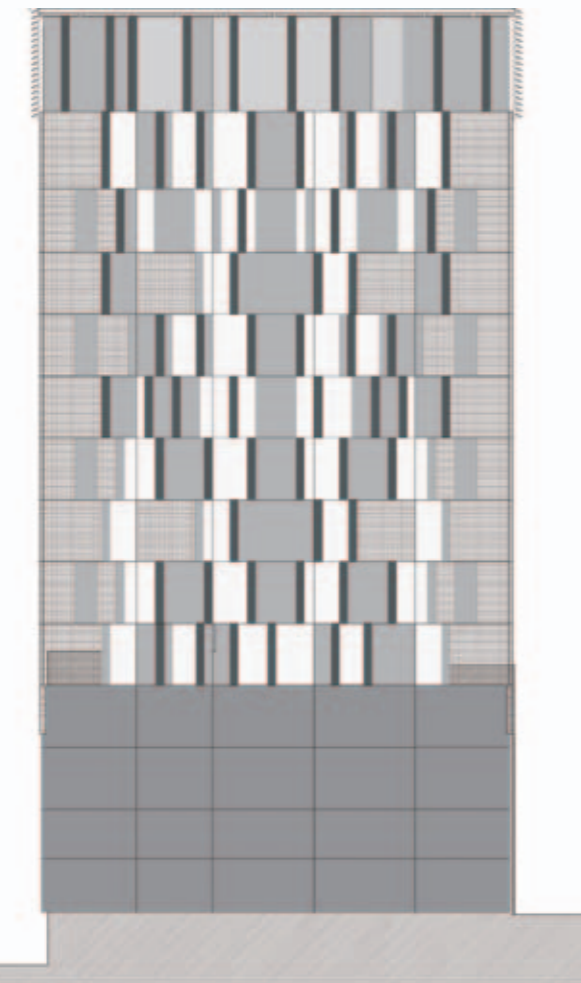
01 East Elevation
东立面
Sussex Street
莎瑟街
Scale: 1:100
比例: 1:100



02 North Elevation
北立面
Sands Street
金沙街
Scale: 1:100
比例: 1:100



01 West Elevation
西立面
Sands Street
金沙街
Scale: 1:100
比例: 1:100



02 South Elevation
南立面
Scale: 1:100
比例: 1:100



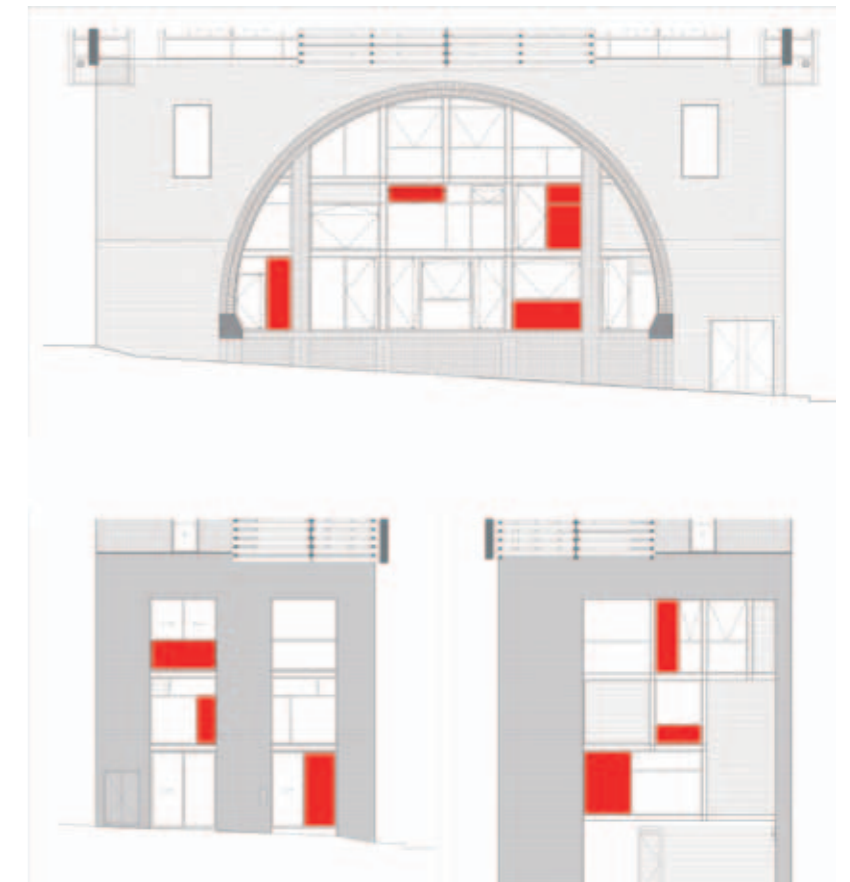
Project Overview

The Jade Apartment tower is located in the center of Sydney's CBD. The 15-storey tower consists of 27 one, two and three-bedroom apartments, plus double-level penthouses with a vaulted glass ceiling. Architects are using a non-formula design approach to enrich the lifestyle experience, not sterilize it. Living environments should be able to relate to a resident's moods, or at least offer a diverse range of environments that appeal to the various lifestyle journeys, not the bland, corporatized environments they are often given.

Building Design

The building is north facing yet it has a fully glazed façade. Large perforated metal louver blades and perforated mesh screens allow occupants to control sunlight, views and privacy. The result is a façade that becomes increasingly translucent towards the sky. The glass-walled building has an ephemeral quality which de-materializes as it rises, culminating in the vaulted see-through roof.

The building is located in a historic part of the city surrounded by 4 storey masonry former warehouses. The tower floats over an arched masonry podium which visually complements the adjoining brick buildings and echoes the character of this part of town. Its lobby contains the residential foyer and a cafe/bistro in the same space, which has a vaulted ceiling over the entry. Jade that brings the outside in. This design philosophy of openness extends to all balconies and living areas, which are full-height glass. The interior design of Jade interplays the structured linear elements and the curved glass façade concept, with apartments reflecting the flow of the city lifestyle.



Detailed Elevation
细节立面图
Sands Street North
金沙街北